

You, Unlimited

Ryukoku University Guide For Exchange Students



Please read this guide VERY carefully before filling in the application form.
We will explain and help you with your application preparation. As immigration procedures take a very long time for processing, please be sure to submit **ALL** required materials as early as possible.

Nomination / Application Deadlines

- (1) The **Home University Coordinator** must complete and submit the online [Nomination Sheet for Fall 2025 Entry to Ryukoku University].

NOMINATION FORM SUBMISSION DEADLINE:

April 1st, 2025 ~ April 30th, 2025 Japan Standard Time <Strictly Observed>.

- (2) **Nominated Students** are required to fill out and submit the [Application for Admission to Ryukoku University] online form, **which will be sent to the students by the Home University Coordinator.**

APPLICATION SUBMISSION DEADLINE:

April 7th, 2025 ~ May 14th, 2025 Japan Standard Time <Strictly Observed>

- (3) **Notification of Acceptance or Non-Acceptance, and Sending of Acceptance Letter**

Those who have completed the above procedures by the deadline will be notified of their acceptance or non-acceptance in approximately the middle of June.

- (4) Students who have been accepted will receive their **Certificate of Eligibility (COE)** at approximately the beginning of August.

Certificate of Eligibility & Student Visa

To receive a student visa from the Japanese Embassy or Consulate, you need a **Certificate of Eligibility (COE)**. The Ryukoku University Center for the Promotion of Global Education (R-Globe) Office will apply for this (in Japan) on your behalf, *after* we receive all your required application documents. It generally takes six to eight weeks for the Certificate to be issued, so be sure to submit all your materials as soon as possible to avoid any possible delay. Once we receive the Certificate of Eligibility, we will send it together with the Letter of Acceptance to you in a “Welcome Package”, addressed to your home university. Once you receive these documents, please take the Certificate of Eligibility and the Letter of Acceptance to the Japanese Embassy in your own country to apply for your student visa.

IMPORTANT!! Regarding the Application Form

- ◎Regarding the ID photograph, please assure that the photo fits these specifications: **facing front, showing the upper half of the body (shoulders and above), with no objects or shadows in the background.**
- ◎Please select the Faculty/Graduate School that is most closely related to your home university major.
- ◎Please note that you need to have obtained a Bachelor’s degree and currently belong to a Graduate School at your Home University before arrival if you intend to enroll in any of the Graduate Schools of Ryukoku University.

Regarding Submission of the “Grid for Self-Assessment of Japanese Language Skills” and “SPOT Test” Results

In addition to the “**Certificate of Japanese Language Proficiency**”, it is necessary for Exchange Applicants to submit the following, in accordance with their requested study course.

ALL Exchange Applicants: “Grid for Self-Assessment of Japanese Language Skills” (Before filling out the

document, please first read the “Explanation for Self-Assessment of Japanese Language Skills” provided. Applicants who do not yet have a Ryukoku University ID Number may leave that line blank.

JEP-J Study Course Applicants Only: All JEP-J Applicants must take the online SPOT Test and assure that the results (PDF) are submitted through our online application portal by the final submission deadline. (Refer to *Nomination/Application Deadlines* above).

Ryukoku University Academic Calendar

There are two semesters per Academic Year at Ryukoku University. Semester 1 is from April to September and Semester 2 is from September to March.

Your exchange period starts during Orientation and ends with the completion of the examination period. Your application can not be accepted if you are unable to participate fully in the Orientation Week or if you have to return to your home country before examinations end. Please note that if you join us halfway through the term or if you go back to your home country before taking the examinations, you will not receive the relevant class credits.

Orientation Week 【Tentative】

September 8th – September 12th, 2025 【Tentative】

Semester 2 (Fall 2025) : September 2025~March 2026

(Spring Holiday: Early February 2026 ~ Late March 2026)

Latest date to check out of Dormitory: March 19th, 2026 (Tentative)

Semester 1 (Spring 2026) : April 2026~September 2026

(Summer Holiday: Early August 2026 ~ Mid-September 2026)

Latest date to check out of Dormitory: August 10th, 2026 (Tentative)

- ◆ The room you live in is available even during the Summer and Spring holidays, until your dormitory check-out date.
- ◆ The latest date to check out of the dormitory is subject to change.

Arrival Dates and Moving into the Dormitory

The Entrance Ceremony for Semester 1, 2025 will be held on April 2nd. International Students will be able to move into the student dormitory from March 24th, 2025.

Dormitory Check-in Dates: September 4th and 5th, 2025 [2 days] 【Tentative】

Courses of Study

There are four patterns of study available to Exchange Students.

① JEP-E (Japanese Experience Program in Kyoto – In ENGLISH)

This study course is designed for students with no Japanese language study experience (or for those who have only studied Japanese for a minimal amount of time) and for students who will not come to Japan with the goal of focusing on Japanese language studies. **All classes are offered in English.**

Exchange Students take classes in Japanese Society and Culture (Japanese History, Society, Economics, Business Administration, Law, Technology, Literature and Movies, Media and Arts, Pop Culture, etc.. Students also learn about Kyoto's rich culture and traditions, including Buddhist Thought. An introductory language class, taking place three times a week, serves as a first exploratory step into the world of Japanese.

For this study course, we strongly recommend that students whose native language is not English have previously achieved an English test score equivalent to TOEFL PBT 500.

Students are also eligible to register for a selection of English-taught classes in our regular Faculties/Graduate Schools.

If the JEP-E study course is selected on the application form, this decision may not be changed once your application form has been submitted. Please give very careful consideration to which study course you would like to apply for at the time of application!

Furthermore, students who have a one-year exchange term and initially register for this study course will continue taking JEP-E courses in their second semester.

② JEP-J (Japanese Experience Program in Kyoto – In JAPANESE)

This study course offers classes taught **mostly in Japanese**. It is composed of ① Japanese language classes and ② elective subjects (mostly taught in Japanese) focusing on various aspects of Japanese culture and society.

Japanese classes are offered from the upper beginner to advanced levels, divided according to the Common European Framework of Reference for Languages (CEFR) “Can-Do” goals. Focusing on practical use of the language, students participate in field trips and give presentations. Elective classes make the most of the university's location in Kyoto, the heart of Japanese traditions and culture. Classes in Japanese Culture, History, Literature, Society, Religion, Economics, Business Administration, Education, Law, Science, and Pop Culture are offered. (In addition to electives taught in Japanese, we also offer a selection of electives taught in English.)

Students are also eligible to register for a selection of English-taught classes in our regular Faculties/Graduate Schools.

We recommend that students in this course have previously studied the Japanese language for at least 300 hours, or that they have previously achieved a level of N4 on the Japanese Language Proficiency Test (JCLP). Furthermore, with regards to all JEP-J Applicants: if it is determined by our Japanese Placement Test that you do not meet the necessary Japanese level, you will be required to join the JEP-E study course.

Participants in the [JEP-J] study course who place in Class 4 or above on the Japanese Placement Test are eligible to enroll in classes within our regular Faculties or Graduate Schools, in addition to subjects from the JEP-J curriculum. Students placed in Class 4 or above have freedom in the degree they wish to participate in the JEP-J study course. It is also possible to arrange one's schedule in such a way that there is a focus on selected Faculty/Graduate School subjects of interest.

*Students in JEP-E and JEP-J2 and JEP-3 classes are eligible to take undergraduate and graduate courses offered in English.

③ Registration for Regular Faculty Classes *only*

This option applies to Exchange Students who, based on the conditions set forth in a Student Exchange Agreement concluded between specific Faculties at both universities, may *only* register for classes in the Faculty to which they belong.

④ Registration for Regular Graduate School Classes *only*

This option applies to Exchange Students who, based on the conditions set forth in a Student Exchange Agreement concluded between specific Graduate Schools at both universities, may *only* register for classes in the Graduate School to which they belong.

Important: Regarding the Selection of Classes

<STEP 1>

First, please confirm whether you are eligible to register for classes in the Japanese Experience Program in Kyoto (JEP Kyoto) by asking the exchange program representatives at your home university. Some exchange students will *only* be eligible to register for regular classes in a *specific* Faculty or Graduate School, based on the conditions of the Student Exchange Agreement established between Ryukoku University and their home university,

<STEP 2>

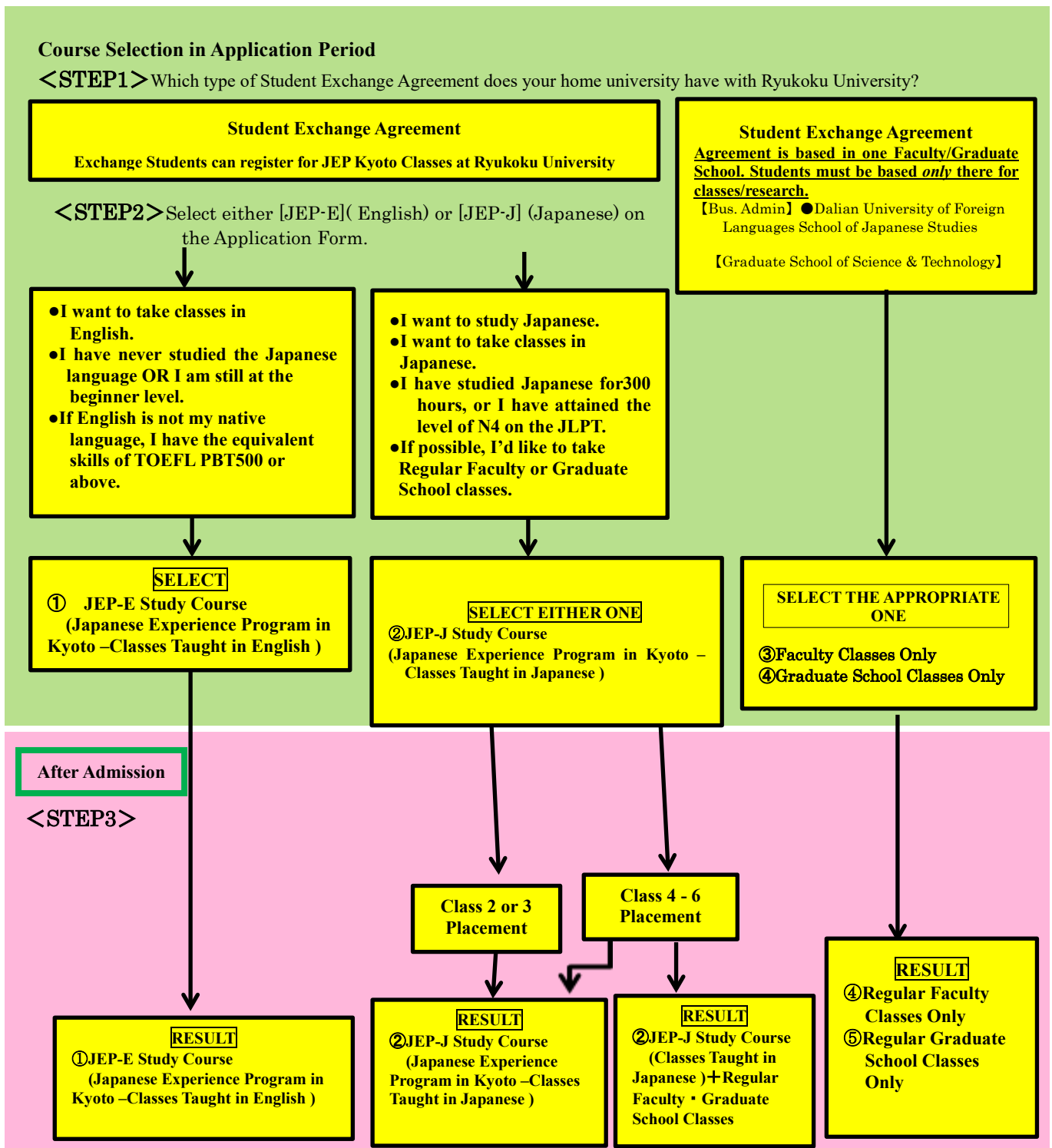
● In the case that you are eligible to register for classes in the Japanese Experience Program in Kyoto (JEP Kyoto), you must select either **[JEP-E]** (classes taught in English) or **[JEP-J]** (classes taught in Japanese) on the application form. Please consider your choice *very* carefully, as you will not have the option to switch to a different course after submitting your application.

● The **[JEP-J]** study course offers Japanese classes for those who have studied the language for 300 hours or more. In other words, we also recommend this study course for students who have attained skills equivalent to level N4 of the Japanese Language Proficiency Test (JLPT).

<STEP 3>

● Those who, on the application form, select **[JEP-E]** (classes taught in English) or **[Faculty Classes Only]** **[Graduate School Classes Only]** (based on their institutional Student Exchange Agreements) will not take the Japanese Language Placement Test.

Flow Chart of Course Selection from Application to Admission



Campuses

Ryukoku has **three campuses** in and around Kyoto. These campuses are close to train lines and within easy reach of each other, so you should be able to commute easily between them.

*There are free shuttle buses between the campuses throughout the day, with Fukakusa as the central campus.
(From Fukakusa to Omiya: 20 Minutes; From Fukakusa to Seta: 40 minutes).



◆FUKAKUSA

FUKAKUSA Campus, located in southern Kyoto, is the **main campus**. The Center for the Promotion of Global Education and all the JEP Kyoto classes are located on this campus. The Faculties of International Studies, Economics, Business Administration, Law, Policy Science, and Sociology, along with First and Second Year subjects of the Faculty of Letters and the Faculty of Psychology are located here.



◆OMIYA

OMIYA Campus is our original campus (founded in 1639), and is located in central Kyoto, just beside historic Nishi Hongwanji Temple. Third- and fourth-year subjects of the Faculty of Letters and the Faculty of Psychology, as well as those of the Graduate School of Psychology, are taught here, and the campus provides an ideal calm and relaxed atmosphere for study and research.



◆SETA

SETA Campus, located in Shiga Prefecture's "Biwako Culture Park", is surrounded by nature and is the newest and largest campus. The Faculties of Advanced Science and Technology and Agriculture are located here.

Regarding Class Registration

●Exchange Students must register for a minimum of 16 credits per semester (and 32 credits for one year) (The minimum credit amount is subject to change). To transfer credit after the exchange period, students should check carefully which Ryukoku University classes are required, and which will be officially recognized, by their home university.

●JEP-J Applicants assigned to Class 4 or above are eligible to register for selected Faculty/Graduate School classes taught in Japanese and English, and JEP-J Applicants assigned to Class 2 or 3, as well as JEP-E Applicants, are eligible to register for selected Faculty/Graduate School classes in English.

●Students who are eligible to register for regular Faculty/Graduate School classes should be aware that there are some classes that cannot be registered for. These include those with an early registration requirement, those which have a student limit, seminars (classes written as ゼミ or 演習, etc.), as well as those with other systematic restrictions. Permission must be received prior to registering for any Faculty/Graduate School classes.

●The Ryukoku University Syllabus is available at the following link. Please refer to it.

<https://syllabus.ws.ryukoku.ac.jp/acrsw/CSylNoSSO/CNoSSO.do>

Reference : AY2025 List of JEP-J Subjects (※Subject to change in a subsequent year)

SEMESTER 1 (SPRING)	COMPU L S O R Y	LAN G U A G E	Japanese Language A for all levels	11	Please refer to the following pages for details.			
SEMESTER 1 (SPRING)	E L E C T I V E	J A P A N E S E	Japanese Religions A (J)	2	Thurs 4	ONISHI Kaoru	Part-Time Instructor (Letters)	Japanese
			Japanese History & Literature A (J)	2	Mon 4	NOSE Eisui	Part-Time Instructor (Letters)	
			Japanese History & Literature A (J)	2	Tues 4	AMANO Katsushige	Letters	
			Japanese Society & Culture A (J)	2	Thurs 4	ANDA Reiko	Part-Time Instructor (Sociology)	
			Japanese Society & Culture A (J)	2	Wed 3	NAGATOMI Kazuaki	Part-Time Instructor (Policy Science)	
			Japanese Science & Technology A (J)	2	Thurs 5	MARUYAMA Atsushi, etc.	Advanced Science & Technology	
			Japanese Economics & Business Administration A (J)	2	Mon 4	SHINTOYO Naoki	Economics	
			Japanese Economics & Business Administration A (J)	2	Tues 4	YU Jian	Business Administration	
			Japanese Martial Arts & Theater A (J)	2	Wed 4	NISHI Yoko	Part-Time Instructor (R-Globe)	
			Japanese Language A (J)	2	Thurs 5	UCHIDA Tomoko	Letters	
			Japanese Law & Politics A (J)	2	Fri 4	IKEO Yasushi	Part-Time Instructor (Law)	
			Japanese Religions A (E)	2	Thurs 5	MICHON Nathaniel	Part-Time Instructor (Letters)	
			Japanese Economy & Management (E)	2	Mon 3	IKEDA Maria	Part-Time Instructor (R-Globe)	
			Japanese Law & Politics (E)	2	Thurs 3	MIYAZAKI Hiroshi	Part-Time Instructor (Intl Studies)	
			Special Lecture 1A (RYUKOKU Criminology) (E)	2	Wed 5	HAMAI Koichi, etc.	Law	
			Special Lecture 1A (International Political Economy) (E)	2	Tues 5	SHIMIZU Kosuke	International Studies	
			Special Lecture 1A (IGO) (J)	2	Thurs 3	IMABUN Yoshiyuki	Part-Time Instructor (R-Globe)	
			Special Lecture 1A (JLPT Level N1) (J)	2	Wed 3	UEMURA Naomi	Part-Time Instructor (R-Globe)	
			Special Lecture 1A (JLPT Level N2) (J)	2	Wed 3	MITANI Shizuko	Part-Time Instructor (R-Globe)	
			Special Lecture 1A (JLPT Level N2 basic) (J)	2	Mon 3	MITO Yuriko	Part-Time Instructor (R-Globe)	
			Special Lecture 1A (EJU) Japanese Language Focus (J)	2	Mon 4	MITO Yuriko	Part-Time Instructor (R-Globe)	
Special Lecture 1A (EJU) Comprehensive Focus (J)	2	Mon 3	UEMURA Naomi	Part-Time Instructor (R-Globe)				
Special Lecture 1A (Introduction to Japanese Culture) (J)	2	Tues 5	IZUMI Fumiaki	International Studies				
Special Lecture 2A (KANJI 1) (J)	1	Tues 4	MITO Yuriko	Part-Time Instructor (R-Globe)				
SEMESTER 2 (FALL)	COMPU L S O R Y	LAN G U A G E	Japanese Language B for all levels	11	Please refer to the following pages for details.			
SEMESTER 2 (FALL)	E L E C T I V E	J A P A N E S E	Japanese Religions B (J)	2	Thurs 4	ONISHI Kaoru	Part-Time Instructor (Letters)	Japanese
			Japanese History & Literature B (J)	2	Mon 4	NOSE Eisui	Part-Time Instructor (Letters)	
			Japanese History & Literature B (J)	2	Tues 4	AMANO Katsushige	Letters	
			Japanese Society & Culture B (J)	2	Thurs 3	YAN Meifang	Sociology	
			Japanese Society & Culture B (J)	2	Wed 3	NAGATOMI Kazuaki	Part-Time Instructor (Policy Science)	
			Japanese Science & Technology B (J)	2	Wed 4	UEDA Yoshiaki, etc.	Advanced Science&Technology	
			Japanese Economics & Business Administration B (J)	2	Thurs 3	KATO Hideya	Economics	
			Japanese Economics & Business Administration B (J)	2	Fri 4	YU Jian	Business Administration	
			Japanese Martial Arts & Theater B (J)	2	Tues 5	SHIMADA Hiromi	Part-Time Instructor (R-Globe)	
			Japanese Language B (J)	2	Thurs 5	UCHIDA Tomoko	Letters	
			Japanese Law & Politics B (J)	2	Fri 4	IKEO Yasushi	Part-Time Instructor (Law)	
			Japanese Religions B (E)	2	Thurs 5	MICHON Nathaniel	Part-Time Instructor (Letters)	
			Japanese Media & Arts (E)	2	Wed 3	BATISTELLA TAHARA Danielly	Part-Time Instructor (R-Globe)	
			Japanese Society (E)	2	Fri 4	KIM Victoria	Part-Time Instructor (Intl Studies)	
			Japanese Technology (E)	2	Tues 5	KIMURA Mutsumi	Advanced Science & Technology	
			Japanese Pop Culture (E)	2	Tues 4	AZLAN Saquifah	International Studies	
			Special Lecture 1B (Postcolonialism) (E)	2	Tues 5	SHIMIZU Kosuke	International Studies	
			Special Lecture 1B (IGO) (J)	2	Thurs 3	IMABUN Yoshiyuki	Part-Time Instructor (R-Globe)	
			Special Lecture 1B (JLPT Level N1) (J)	2	Wed 3	UEMURA Naomi	Part-Time Instructor (R-Globe)	
			Special Lecture 1B (JLPT Level N2) (J)	2	Wed 3	MITANI Shizuko	Part-Time Instructor (R-Globe)	
			Special Lecture 1B (JLPT Level N2 basic) (J)	2	Mon 3	MITO Yuriko	Part-Time Instructor (R-Globe)	
Special Lecture 1B (EJU) Japanese Language Focus (J)	2	Mon 4	MITO Yuriko	Part-Time Instructor (R-Globe)				
Special Lecture 1B (EJU) Comprehensive Focus (J)	2	Mon 3	UEMURA Naomi	Part-Time Instructor (R-Globe)				
Special Lecture 1B (Introduction to Japanese Culture) (J)	2	Fri 4	IZUMI Fumiaki	International Studies				
Special Lecture 2B (KANJI 1) (J)	1	Tues 4	MITO Yuriko	Part-Time Instructor (R-Globe)				
Special Lecture 1B (Project-based learning with Ryukoku students) (E)	2	Fri 4	YAWATA Koichi	International Studies				

Reference : AY2025 List of JEP-E Subjects (※Subject to change in a subsequent year)

JEP Kyoto (JEP-E) Curriculum 2025 [Semester 2 (Fall)]

Semester	Subject Type	Core (Compulsory)	Elective	Subject Title	Credits	Day & Period	Instructors	Instructor Faculty/Title	Language
Semester 2 (Fall)	Seminar	●		Introductory Seminar B	2	Fri 3	CHAPPLE	International Studies	English
	Founding Philosophy Subject	●		Buddhist Thought B	2	Tues 3	GRANBACH	Part-Time Instructor	English
	Introductory Japanese Language	●		Introductory Japanese I	3	Mon 1 Wed 1 Wed 2	MAKIDONO	Part-Time Instructor	English
		●		Introductory Japanese II	3	Tues 2 Thurs 1 Thurs 2	KOYAMA	Part-Time Instructor	English
	Regional Cultural Studies	●		Kyoto Studies B	2	Wed 4	MCNULTY	Part-Time Instructor	English
	Subjects Coordinated by R-Globe	●		Exploring Business in Kyoto	2	Fri 1	DRAGUNA	Business Administration	English
				Fieldwork in Ryukoku Museum	2	Mon 3	GRANBACH	Part-Time Instructor	English
	Japanese Society & Culture Subjects		○	Japanese Religions B	2	Thurs 5	MICHON	Part-Time Instructor	English
			○	Japanese Media & Arts	2	Wed 3	BASTISTELLA	Part-Time Instructor	English
			○	Japanese Society	2	Fri 4	KIM	International Studies	English
			○	Japanese Technology	2	Tues 5	KIMURA, etc.	Advanced Science & Technology	English
			○	Japanese Pop Culture	2	Tues 4	AZLAN	International Studies	English
	Special Lectures		○	Special Lecture 1B (Project-based learning with Ryukoku students)	2	Fri 4	YAWATA	International Studies	English
			○	Special Lecture 1B (Postcolonialism)	2	Tues 5	SHIMIZU Koroike	International Studies	English

JEP Kyoto (JEP-E) Curriculum 2025 [Semester 1 (Spring)]

Semester	Subject Type	Core (Compulsory)	Elective	Subject Title	Credits	Day & Period	Instructors	Instructor Faculty/Title	Language
Semester 1 (Spring)	Seminar	●		Introductory Seminar A	2	Tues 4	MURATA	Policy Science	English
	Founding Philosophy Subject	●		Buddhist Thought A	2	Tues 3	GRANBACH	Part-Time Instructor	English
	Introductory Japanese Language	●		Introductory Japanese I	3	Mon 1 Wed 1 Wed 2	MAKIDONO	Part-Time Instructor	English
		●		Introductory Japanese II	3	Tues 2 Thurs 1 Thurs 2	KOYAMA	Part-Time Instructor	English
	Regional Cultural Studies	◆		Kyoto Studies A	2	Wed 4	MCNULTY	Part-Time Instructor	English
	Subjects Coordinated by R-Globe	◆		Exploring Business in Kyoto	2	Wed 3	KISHITA	Business Administration	English
				Fieldwork in Ryukoku Museum	2	Mon 3	GRANBACH	Part-Time Instructor	English
	Japanese Society & Culture Subjects		○	Japanese Religions A	2	Thurs 5	MICHON	Part-Time Instructor	English
			○	Japanese Economy & Management	2	Mon 3	IKEDA	Part-Time Instructor	English
			○	Japanese Law & Politics	2	Thurs 3	MIYAZAKI	Part-Time Instructor	English
	Special Lectures		○	Special Lecture 1A (RYUKOKU Criminology)	2	Wed 5	HAMAI, etc.	Law, etc.	English
			○	Special Lecture 1A (International Political Economy)	2	Tues 5	SHIMIZU	International Studies	English

Accommodation

Ryukoku University has the following dormitories for International Students: **Ryukoku International House** and **Mitra-kan**. There are **Resident Supporters** (Japanese Students) in the dormitories to help you during your stay in Ryukoku University. Application procedures will be announced separately.

Rental Bedding is required for all dormitory residents. It is not possible to cancel this service.
Expense: 1,680 JPY/month.

◎Please note that dormitory assignments are decided by the university and, in principle, cannot be changed.

◎Students with health concerns which require special consideration are given preference with regards to the allocation of room type. Thank you for your understanding.

◎Please refer to this website for more information regarding the student dormitories:

<http://intl.ryukoku.ac.jp/dormitory/index.html>

  <p>↑ Map ↑</p>	<p>りゅうこく国際ハウス Ryukoku International House</p> <p>住所 612-0029 京都市伏見区深草西浦町 4-38</p> <p>形態 シングル・ツイン 共同設備: シャワー・トイレ・キッチン・冷蔵庫・掃除機・洗面所・コインランドリー 個室設備: 机・椅子・ベッド・本棚・冷蔵庫・物干し竿・電気スタンド・エアコン・カーテン</p> <p>インターネット 個室で使用可 (ルーターが必要)</p> <p>寮費 保証金 80,000 円 (入寮時のみ必要) 1 か月 シングル: 35,000 円 + 光熱水費 10,000 円 (定額) 予定 ツイン: 23,000 円 + 光熱水費 6,000 円 (定額) 予定 ※寮費は変更になる場合があります</p> <p>アクセス 深草学舎まで徒歩約 5 分 京阪電車深草駅まで徒歩約 7 分 地下鉄くいな橋駅まで徒歩約 10 分 JR 稲荷駅まで徒歩約 12 分</p>
  <p>↑ Map ↑</p>	<p>ミトラ館 Mitra-kan</p> <p>住所 612-0029 京都市伏見区深草西浦町 4-10</p> <p>形態 シングル 共同設備: シャワー・キッチン・冷蔵庫・コインランドリー 個室設備: 机・椅子・ベッド・本棚・電気スタンド・エアコン・カーテン・簡易キッチン・トイレ・物干し竿・冷蔵庫</p> <p>インターネット 個室で使用可</p> <p>寮費 保証金 100,000 円 (入寮時のみ必要) 1 か月 45,000 円 + 光熱水費 10,000 円 (定額) 予定 ※寮費は変更になる場合があります</p> <p>アクセス 深草学舎まで徒歩約 5 分 京阪電車深草駅まで徒歩約 7 分 地下鉄くいな橋駅まで徒歩約 10 分 JR 稲荷駅まで徒歩約 12 分</p>

*The dormitory fees shown are the fees required after deducting the International Student Accommodation Support Scholarship (single ¥10,000/month, twin ¥5,000/month).

Exchange Conditions

The conditions of your exchange are based on the terms and conditions in the Student Exchange Agreement between your Home University and Ryukoku University. Please consult your Home University if you are unsure of these conditions.

Bank Accounts

You will need to **open a bank account after your arrival** so that your scholarships can be deposited and your room and utility expenses can be withdrawn directly. If you do not already have a Japanese bank account, please carry out the necessary procedures. [*New accounts must be opened with Yucho Ginko (Japan Post Bank).*]

The following are required to have your account established:

- ① The document [口座開設申込用紙 (Application for Opening an Account)] – (Resident Supporters will provide assistance with this process during the Orientation)
- ② The document [預金口座振替用紙 (Bank Account Transfer Sheet)] – (to be provided after Dormitory Entry)
- ③ A copy of your Residence Card, which will be issued to you upon your arrival in Japan.

Automatic withdrawal permission (of dormitory fees) takes approximately two months to establish. Until that time, it will be necessary to transfer fees yourself from a nearby convenience store. **IT IS NOT POSSIBLE TO PAY BY CREDIT OR DEBIT CARD.** Also, please note that Japan Post Bank does not offer online banking services.

You may also like to open an account with an international bank (i.e. Citibank, Star, Cirrus and Maestro) before your arrival.

IMPORTANT: Common Financial Problems After Arrival

It is always the case at the beginning of the semester that a few students have a very difficult time because they are not able to use the bank cards which they have brought with them from abroad, and therefore are not able to withdraw the necessary funds for their everyday lives.

- ① Please be sure to confirm with your card company/bank that: (1) you will *immediately* be able to withdraw funds after arriving in Japan with your card, and (2) that you know exactly how to use the card. Please make it a point to remember your pin number to avoid having your account blocked.
- ② It is sometimes the case that students do not inform the bank in their home country of their exchange study period, and their bank card is frozen due to sudden use in another country. Please be sure to inform your bank that you will be studying abroad to avoid this problem.
- ③ There is often a daily limit for withdrawing money internationally from one's bank in their home country. Please be well aware of what the daily limit is, so you can surely make initial dormitory payments, as well as have enough for initial living expenses. If your bank will not allow you to withdraw enough money shortly after your arrival, please be sure to bring sufficient funds with you.

Health Insurance

Under the Japanese Immigration Laws, it is compulsory for all Exchange Students who will be in Japan for at least three months to enter the Japanese National Health Insurance system, even if one has insurance in their home country. The insurance fees are estimated to cost 1500yen to 2000yen per month. Enrolment in Japanese National Health Insurance can be carried out at the Ward Office closest to your Japanese residence. If you feel it is necessary, you might also like to purchase international health insurance in your home country before leaving for Japan. More information on Japanese National Health Insurance will be provided during Orientation Week.



Center for the Promotion of Global Education (R-Globe) Office
〒612-8577 Kyoto-shi, Fushimi-ku, Fukakusa, Tsukamoto-cho 67
Tel: +81 (0)75-645-7898 Fax: +81 (0)75-645-2020
r-globe@ad.ryukoku.ac.jp inbound.r-globe@ad.ryukoku.ac.jp

You, Unlimited

Ryukoku University International Student Dormitories General Rules



The General Rules detailed within must be observed by ALL Dormitory Residents. The dormitory is a communal living space of students from several different countries. Please be respectful of different cultures and customs, and mindfully avoid thoughtless behavior. Please respect the privacy of others and behave appropriately so all residents can have an enjoyable university life.

Admission Procedures

- ① After submitting the application form to enter the Ryukoku University International Student Dormitory, the Student Information Centre (NASIC) 【※】 will send you an email for information regarding your arrival date, and provide a document about the date you will enter the dormitory. Decide your move-in date and return the completed documents to NASIC by the specified date by email.

【※】 [NASIC is the private company which manages the dormitories on behalf of the Center for the Promotion of Global Education (R-Globe) Office].

The application process for dormitory admission will be provided separately.

- ② Please sign the [Pledge] and return it to NASIC.

- ③ Regarding your First Payment

For those staying at [Mitra-kan], [Ryukoku International House]:

Please make your payment of the Security Deposit and <First Time> Usage Fees [Rent, Utilities, Bedding (optional)] at the nearest convenience store shortly after your arrival. This payment must be made in cash. **IT IS NOT POSSIBLE TO PAY BY CREDIT OR DEBIT CARD.** Also, please note that Yucho Ginko (Japan Post Bank) does not offer online banking services.

- ④ Security Deposit

In principle, the security deposit will be returned when you check-out of the dormitory, by bank transfer on a specific day designated by NASIC. *However*, if you have failed to pay your room rent or utilities fees, or if payment is required for any damages caused to the room or dormitory, the required fees will be deducted from this security deposit. If the amount required exceeds the amount of the security deposit, a bill will be sent to you for the excess amount. Students with a room rental waiver are not required to pay a security deposit.

- ⑤ Automatic Account Withdrawal

Room rent and utilities fees will be automatically withdrawn from your bank account on a designated day of the month.

If you do not have a bank account available in Japan when you enter the dormitory, you will open one.

The account will be at Yucho Ginko. Please complete the form for opening an account and submit it by the specified date.

<<Required Documents>>

- Form for opening the bank account (to be distributed after you enter the dormitory)
- Residence Card copy

For those staying at [Mitra-kan], [Ryukoku International House]:

Each month's room rent and utilities expenses will be automatically withdrawn from your bank account on the 6th of each month (in the case that the 6th is a weekend or national holiday, on the following business day).

※Automatic withdrawal is possible from any Japanese bank. However, those who have not formerly opened a Japanese bank account will have an account established at Yucho Ginko (Japan Post Bank) after their arrival in Japan. Please be sure to fill in this account on your automatic withdrawal form.

- ⑥ Move-In Day

You will be given guidance by either a Resident Supporter 【※】 or the Dormitory Manager.

【※】 The Resident Supporters are Japanese students of Ryukoku University who live in the dormitories to provide international students with assistance regarding their daily lives at the dorms and at the university in general. If you have any difficulties, please either consult either the Resident Supporters or the Center for the Promotion of Global Education (R-Globe) Office.

Rules: Dorm Rent and Utilities

All dormitory residents (including students with a room rental waiver) are required to pay monthly utilities fees, even during break periods in between semesters.

If a room is occupied for less than 15 days of any calendar month, rent will be calculated by the day. If the room is occupied from the 15th of the month on, the cost of one month will be charged. If you wish to prorate your rent for less than 15 days, you must submit a notice of withdrawal to the Dormitory Manager by the 5th of the month *preceding* the month in which you are leaving the dormitory. If you submit the notice after the due date, you will be charged one month's rent, even if you leave within 14 days.

If a [SINGLE] room at Ryukoku International House is occupied for the first eight days of the month, he/she will be charged according to the following:

(International Student: 1 month rent 40,000JPY <Room Rent: 30,000JPY, Utilities 10,000JPY>

↓

(45,000 JPY ÷ 30 days × 8 days = 12,000 JPY [Final charge: 12,000 JPY])

Calculation Method: Monthly Fee ÷ 30 (days) × Number of Days Occupied. All decimal points are cut.

Rules Regarding Incoming/Outgoing

- ① Due to the great number of students arriving in March and August, Occupants checking out must depart by March 19 or August 10 (If this day falls on a weekend or public holiday, checkout must take place on the previous day). Rent and utilities fees will be calculated according to [Rules: Dorm Rent and Utilities] above.
- ② Rental fees, once paid, will not be refunded except in special circumstances. **Notification of leaving the dormitory must be submitted at least one month in advance.**

Checking Out Procedures

- ① Please be sure to submit a “Leaving the Dormitory” form to your Dormitory Manager by the 7th of the month previous to the month you plan to depart. If you fail to turn in the form by that time, even if you plan to reside in your room for only 14 days or less in the following month, you will be charged the full rent amount.
- ② Clean your room and remove your belongings before checking out.
- ③ Approximately One Week before Checkout: Your Resident Supporter will conduct a room check.
- ④ On Checkout Day: Your Resident Supporter will conduct a room check. This room check is required!
- ⑤ Once your electricity fee has been calculated and the condition of your room checked, your Security Deposit will be refunded.

■ In the following cases, occupants will be required to leave the Dormitory:

- ◎ Termination of studies at Ryukoku University
- ◎ Expiration of contract

- ◎ Rejection of application to extend one's Period of Stay
- ◎ Decision by the university that the occupant is no longer eligible to continue living in the dormitory
- ◎ Where delayed payment or compensation exceeds the rental deposit amount
- ◎ Failure to obey dormitory rules
- ◎ Deliberate disobedience of university guidelines and instructions
- ◎ Failure to fulfill one's obligations as a dormitory resident

■ Leaving the Dormitory During the Residence Term

If you wish to leave the dormitory before the resident period expires, notification must be provided to NASIC *AT LEAST* one month in advance.

*If you wish to reside in the dormitory with a daily rate (for less than 15 days), you must submit a [Leaving the Dormitory Notice] to the Dormitory Manager by the 5th of the PREVIOUS month you will check out of the dormitory. If this notice is submitted after the deadline, you will be charged the dormitory fee for the entire month (even if you depart within the first fourteen days of the month).

Please note that it is not possible to check out of the dormitory on a Saturday, Sunday, or National Holiday.

Mandatory Code of Conduct

Please observe the regulations:

- ① **Dormitory property is not to be altered or misused in any way.**
- ② **No economic or political activity may be carried out within the dormitory.**
- ③ **Dormitory furnishings or equipment are not to be removed.**
- ④ **Potential fire hazards such as gas ranges are not to be used outside designated areas**
- ⑤ **Occupants should follow dormitory rules and respect Japanese customs.**
- ⑥ **Do not disturb fellow residents or people living in the surrounding neighborhood.**
(e.g. making loud noise, leaving rubbish in the corridor/on the streets etc.)
- ⑦ **Care should be taken to keep both one's room and the communal living areas clean and sanitary.**
- ⑧ **Fires, thefts, etc. should be reported immediately**

● **Cohabitation is prohibited.**

A single room may only have 1 occupant.

● **Entrance to other Residents' rooms is prohibited.**

You may not enter the rooms of other Residents, even in the case of friends.

● **Overnight guests are not permitted.**

Family and friends are not allowed to stay overnight in the dormitory. They are required to leave the dormitory premises by the curfew designated by each dormitory.

● **Smoking**

Smoking is not allowed within dormitory premises belonging to Ryukoku University (even outside the building)

● **Overnight Trips**

If you go away for an extended period or return to your home country, you must contact the Center for the Promotion of Global Education Office at least 1 week in advance.

Ryukoku International House ▪ Mitra-kan Residents: Fill out Out-of-Town Overnight Stay Form, available by QR Code.

● **Use of Parking Facilities**

Please put an identification sticker on your bicycle (These stickers can be attained from the Resident Supporters). Do not leave your bicycle at the dormitory after you move out. In the case of theft, please report it directly to the police (not the University).

Ryukoku University will not be held responsible for any cases of theft.

● **Pets**

Pets are strictly forbidden in the dormitory.

● **Mailbox**

Affix your name to your dormitory mailbox and be sure to check it at least once a day.

In addition to the rules above, each dormitory has its own regulations. If you fail to follow the regulations, you will be asked to leave the dormitory.